

# SensDesk

Monitoring and control portal for IoT projects with HW group devices

Online sensor status and measurement overview

Alert services

Remote process control and switching

Configurable user interface/dashboard

Quick setup and configuration



SensDesk.com portal is a web-based service, providing online remote monitoring and control capabilities for HW group sensors and devices without need of user IT system configuration or a control application. All monitoring and control functions are available via web browser and mobile app. SensDesk can be used for quick and easy set-up of condition monitoring IoT projects based on HW group monitoring devices, using various networks (Ethernet, WiFi, GPRS, LTE...). Technical experts can monitor and control the system from anywhere.

## APPLICATIONS AND USAGE



IT: Monitoring of operating conditions



Food industry: Monitoring of storage conditions (temperature, humidity, etc.) within a certification system (HACCP)



Pharmaceutical industry: Monitoring of medical material storage



Temperature monitoring in 19" racks and server rooms



Monitoring of UPS status, humidity, power, access to the room

## SUPPORTED DEVICES

The SensDesk portal allows to connect all HW group devices that support the HWg Push protocol:

- ✓ **Poseidon2**  
4002, 3468, 3268, 3266
- ✓ **Damocles2**  
2404, 1208, MINI
- ✓ **HWg-Ares**  
12, 10
- ✓ **STE2**
- ✓ **STE plus**
- ✓ **HWg-PWR 3/12/25**

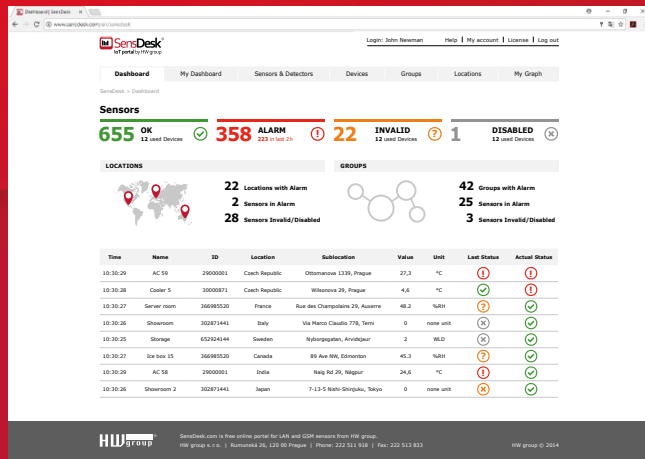
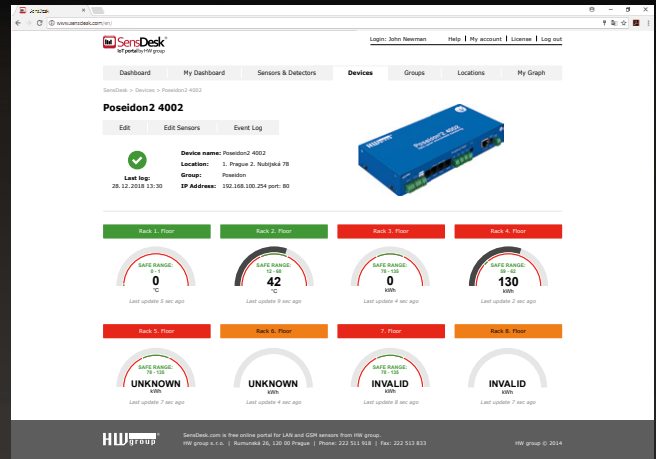
## Alert services

For all sensors serviced by the SensDesk portal, an operating range of values can be set. If this range is exceeded, the system shows an alert for the affected sensor. Alerts can be conditionally forwarded to e-mail or SMS.

All alerts, such as temporary device or sensor inaccessibility or measured values exceeding the specified limits, are recorded in the event log for easy system diagnostics.

## Remote process control and switching

SensDesk can monitor and control virtual outputs of connected devices. User can switch any relay manually; in addition, SensDesk provides several simple algorithms for switching the outputs automatically according to sensor states.



## Configurable user interface/dashboard

SensDesk provides tools for customizing the user interface. Users can define names of their sensors, devices and locations, and group related monitoring and control units together. SensDesk provides a number of elements for displaying the most frequently used quantities, such as temperature, pressure, humidity, fluid level, electrical power, current, voltage, as well as percentages or output relay states.

An additional dashboard presents device and sensor status for system diagnostics.

All data can be presented on timeline in charts, with visible operating/safe range limits. Recorded data can be downloaded from the portal for use in any spreadsheet or diagnostic 3<sup>rd</sup> party software.

## Quick setup and configuration

All HW group devices have a built-in auto detection for the SensDesk portal. Connection of a new device to SensDesk takes less than 60 seconds!

All sensors and devices can have custom names and arranged into groups and locations to provide a clear overview according to user preferences.

## SensDesk is powered by HW group

SensDesk portal is a web-based service, providing online remote monitoring and control capabilities for HW group sensors and devices without need of user IT system configuration or a control application. The SensDesk Mobile application is available for Android and iOS devices.

Users can use unlimited number of sensors, connected to up to 10 HW group devices. To monitor and control more devices, please ask for our concentrator system (expected availability 1Q 2019) that includes SensDesk portal functions.

