

# HWg-STE

# HWg-STE PoE

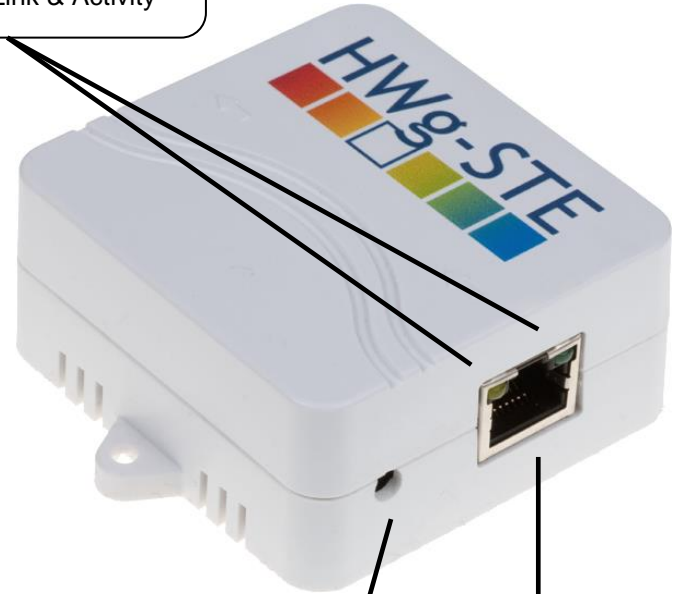
# MANUAL





# HWg-STE connectors

**LED indicators**  
 Green: Power & Mode  
 Yellow: Link & Activity

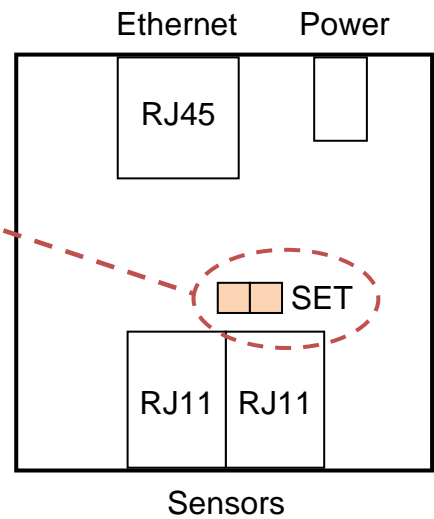


**SENSORS**  
 S1 and S2 ports for connecting temperature or humidity sensors.  
 - Max. distance with 1 sensor is 60m  
 - Max. total length with 2 sensors is 60m

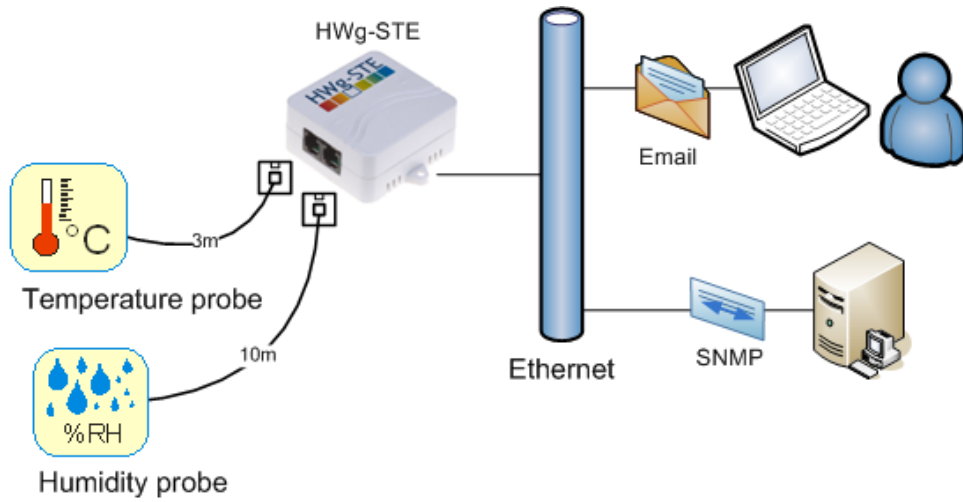
**POWER input**  
 5VDC supply  
 Use the supplied power adapter

**ETHERNET**  
 100 Mbps  
 \*) PoE power for HWg-STE PoE

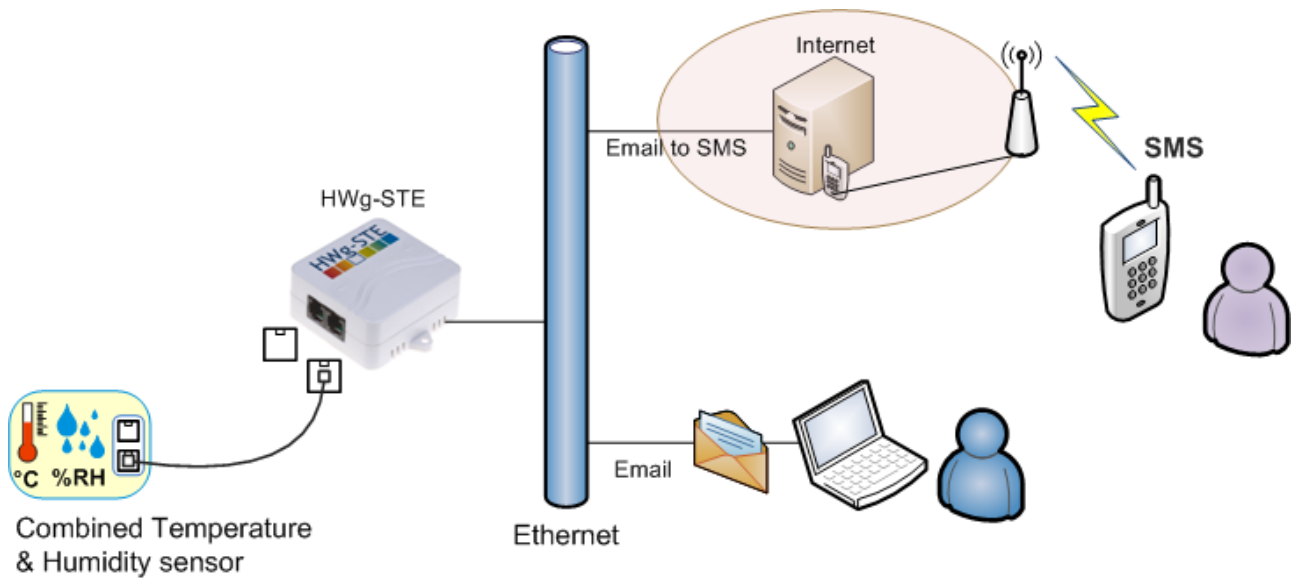
**JUMPER for restoring factory defaults**  
 With the jumper in place, factory defaults are restored within 15 s after powering up. Remove the jumper afterwards.  
**DO NOT LEAVE THE JUMPER IN PLACE PERMANENTLY!**



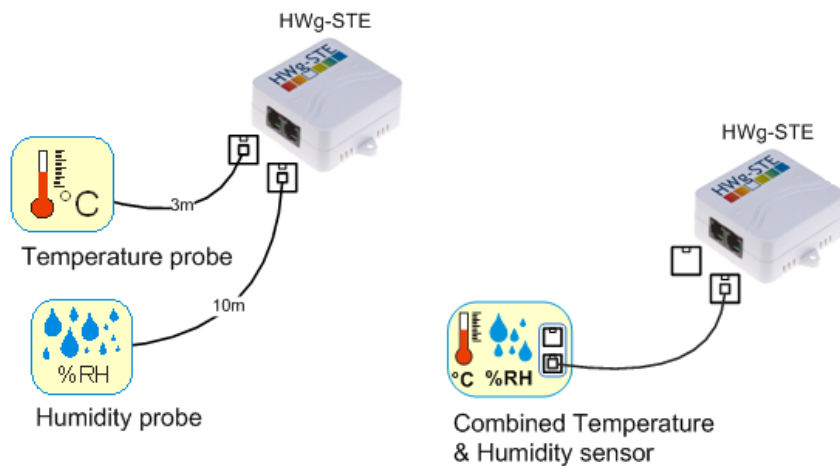
## Recommended connection options



### Forwarding alarms to SMS (via the Email-2-SMS service):



### Sensor connection options:



## First steps

### 1) Connecting the cables

- Connect the unit to the Ethernet (patch cable to a switch, or a cross-over cable to a PC).
- Plug the power adapter in to a power outlet and connect it to the HWg-STE power connector.
- The green **Power & Mode** LED in the RJ45 connector lights up.
- If the Ethernet connection works properly, the **LINK** (yellow) LED lights up after a short while, and then flashes whenever data transfer takes place (activity indication).
- After power up, the **LINK** LED flashes rapidly to indicate IP address negotiation over DHCP.

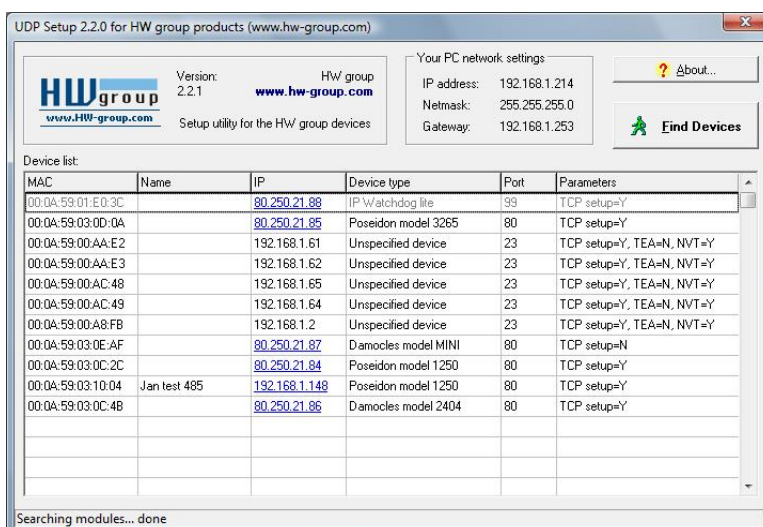
### 2) Configuring the IP address – UDP Config

**UDP Config** utility – root directory of the supplied CD (Windows and Linux versions). Available for download at [www.HW-group.com](http://www.HW-group.com)

Software > UDP Config.

- Click the icon to launch **UDP Config**. The program automatically looks for connected devices.
- To search for devices, click the **Find Devices** icon.

The program looks for devices on your local network. Double-click a MAC address to open a basic device configuration dialog.



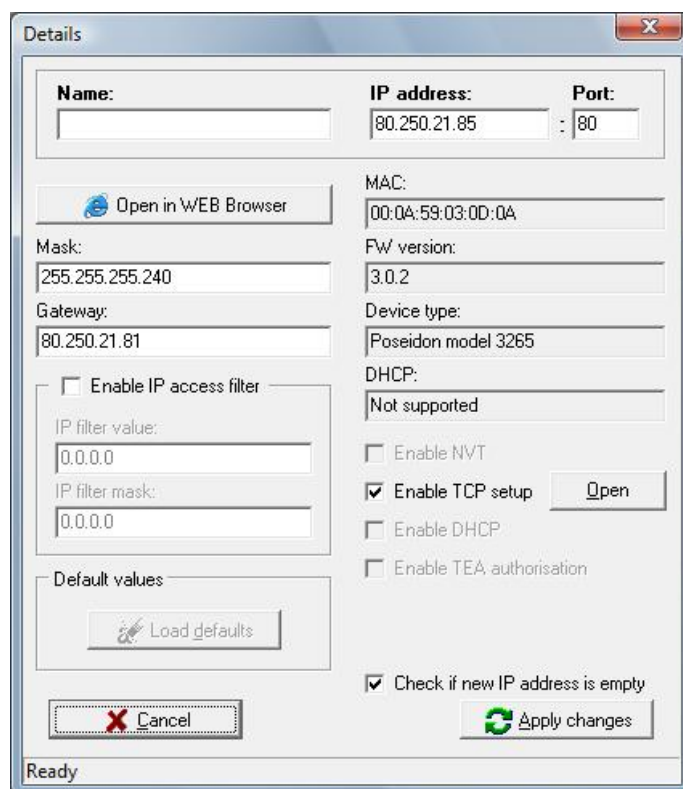
#### Configure network parameters

- IP address / HTTP port (80 by default)
- Network mask
- Gateway IP address for your network
- Device name (optional)

Click the **Apply Changes** button to save the settings.

#### Restoring factory defaults

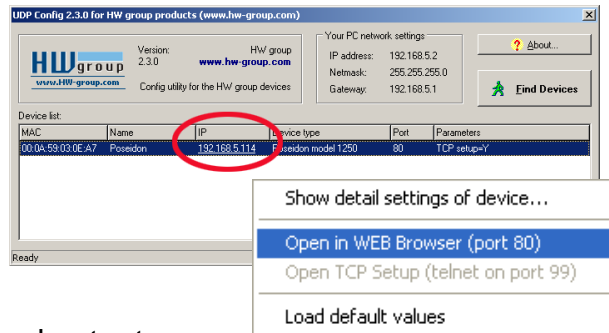
- Right-click on the device MAC address and select “Load default values”. Within 60 seconds after powering up the unit, factory defaults can be restored using UDP Config.
- Disconnect the power jack, connect the jumper near the RJ11 sockets, power up the device and wait 15 seconds. Then, disconnect the power and disconnect the jumper. The device is ready in its factory default configuration.



# First steps

## 3) WWW interface of the device

- To open the WWW interface of the device:
  - Enter the IP address into a web browser
  - Click the IP address in UDP Config
  - Click the underlined IP address in UDP SETUP
- The WWW page displays current states of inputs and outputs.
- Click the “**Graphic Flash SETUP**” link to open the graphical configuration interface (Flash Setup).



Device IP address

IP address / DHCP setup

Outgoing e-mail parameters

Sensors settings

Base Information	
Device Name	HWg-STE
Time	01:07:29
Date	14.07.2009

Sensors			
State	Name	Type	Current Value
✔	Sensor 1	Temp.	28.1 °C

# Product configuration

## HWg-STE

[Home](#) | [General Setup](#) | [SNMP](#) | [Email](#) | [Time](#) | [Sensors](#) | [Sys](#)

**Device name**  
Identifies the device in e-mail and SNMP

### General Setup

Base		
Name	Value	Description
Device Name	<input type="text" value="HWg-STE"/>	0 to 16 characters
WWW Info Text	<input a&gt;"="" http:="" type="text" value="HWg-STE:For more information try &lt;a href='\" www.hw-group.com\"'&gt;www.hw-group.com&lt;=""/>	
Temperature unit	<input type="text" value="Celsius"/>	Celsius/Fahrenheit/Kelvin
<input type="button" value="Save"/>		

User-defined footer.  
For example, administrator's contact details

Unit of temperature, for display and alarm inputs

Network		
Name	Value	Description
DHCP	<input type="checkbox"/>	DHCP Enable/Disable
IP Address	<input type="text" value="192.168.12.103"/>	A.B.C.D
Network Mask	<input type="text" value="255.255.252.0"/>	A.B.C.D
Gateway	<input type="text" value="192.168.12.1"/>	A.B.C.D
DNS Primary	<input type="text" value="192.168.1.253"/>	A.B.C.D
DNS Secondary	<input type="text"/>	A.B.C.D
HTTP Port	<input type="text" value="80"/>	Default 80
<input type="button" value="Save"/>		

Password to access the configuration

Security: Device Admin		
Name	Value	Description
Username	<input type="text"/>	Admin username/password for device configuration changes [0 to 16 characters]
Password	<input type="text"/>	
<input type="button" value="Save"/>		

HWg-STE:For more information try [www.hw-group.com](http://www.hw-group.com)

#### \*added function:

Outgoing ping – function could be used as a “heartbeat”. HWg-STE will ping target IP address.

### SNMP

**HWg-STE**

[Home](#) | [General Setup](#) | [SNMP](#) | [Email](#) | [Time](#) | [Sensors](#) | [System](#)

### SNMP

Port for SNMP polling

SNMP device identification, same as the device name

General SNMP Settings		
Name	Value	Description
System Name	HWg-STE	0 to 16 characters
System Location		0 to 16 characters
System Contact	HWg-STE:For more information try <a href="http://www.hw-group.com">http://www.hw-group.com</a>	
SNMP port	161	Default port 161

SNMP Access		
Community	Read	Enable
public	<input checked="" type="checkbox"/>	<input checked="" type="checkbox"/>
private	<input checked="" type="checkbox"/>	<input type="checkbox"/>

HWg-STE:For more information try [www.hw-group.com](http://www.hw-group.com)

### Email

**HWg-STE**

[Home](#) | [General Setup](#) | [SNMP](#) | [Email](#) | [Time](#) | [Sensors](#) | [System](#)

### Email

SMTP server to use for sending e-mail. TLS is not supported

Email Settings		
Name	Value	Description
SMTP Server	some.smtp.server	IP Address or DNS Name
SMTP Port	25	Default 25
Authentication	<input type="checkbox"/>	Enable/Disable
Username		0 to 32 characters
Password		0 to 32 characters
FROM	user@domain.com	Device email address
Subject	subject	Beginning of email subject
TO	recipient@domain.com	Email Recipient
CC		Email Copy

Sends a test e-mail to all entered recipients

Send Test Email	
<input type="button" value="Test"/>	

HWg-STE:For more information try [www.hw-group.com](http://www.hw-group.com)



# Time



[Home](#) | [General Setup](#) | [SNMP](#) | [Email](#) | [Time](#) | [Sensors](#) | [System](#)

## Time

SNTP Setup		
Name	Value	Description
SNTP Server	<input type="text" value="time.nist.gov"/>	IP Address or DNS Name
Time Zone	<input type="text" value="+1"/>	Number -12 ... +13
Summertime	<input checked="" type="checkbox"/>	last Sun Mar 2:00 - last Sun Oct 2:00
Interval	<input type="text" value="1h"/>	Sync period: Off/1h/24h
<input type="button" value="Save"/>		

SNTP synchronize	
<input type="button" value="Sync"/>	

Time Setup		
Name	Value	Description
Time	<input type="text" value="01"/> : <input type="text" value="18"/> : <input type="text" value="24"/>	hh:mm
Date	<input type="text" value="01"/> . <input type="text" value="01"/> . <input type="text" value="1970"/>	DD.MM.YYYY
<input type="button" value="Save"/>		

HWg-STE:For more information try [www.hw-group.com](http://www.hw-group.com)

# Sensors



[Home](#) | [General Setup](#) | [SNMP](#) | [Email](#) | [Time](#) | [Sensors](#) | [System](#)

## Sensors

Sensor list									
State	ID	Type	Name	Current Value	Save Range	Hysteresis	Email	Sensor Serial Code	Del.
<input checked="" type="checkbox"/>	1	Temp.	<input type="text" value="Sensor 1"/>	32.5 °C	<input type="text" value="10.0"/> ~ <input type="text" value="60.0"/>	<input type="text" value="0.0"/>	<input type="checkbox"/>	28edc7bf010000ae	<input type="button" value="delete"/>
<input type="button" value="Save"/>					<input type="button" value="Find Sensors"/>				
									<a href="#">delete all</a>

HWg-STE:For more information try [www.hw-group.com](http://www.hw-group.com)

Scans for changes in connected sensors

Deletes the sensor from the list

## Graph\*

\*Graph was available in firmware versions 1.0.12 up to 2.1.6.

Due to Adobe Flash technology End of Life (31<sup>st</sup> of December 2020) and discontinued support in web browsers, the feature in firmware 2.1.7 has been permanently removed.

## System

Home | [General Setup](#) | [SNMP](#) | [Email](#) | [Time](#) | [Sensors](#) | [System](#)

### System

Download	
Description	File
Backup configuration	<a href="#">HWg-STE_Config.bin</a>
Online values in XML	<a href="#">values.xml</a>
SNMP MIB Table	<a href="#">HWg-STE.mib</a>
TXT list of common SNMP OIDs	<a href="#">HWg-STE_OID.txt</a>

System	
Name	Value
Version	1.0.0
Compile time	Jun 22 2009, 12:40:28
Build	6475
Vendor ID	0
UpTime	23 min
Upload Firmware or Configuration	<input type="text"/> <input type="button" value="Procházet..."/> <input type="button" value="Upload"/>

Factory Default	System Restart
<input type="button" value="Default"/>	<input type="button" value="Restart"/>

HWg-STE: For more information try [www.hw-group.com](http://www.hw-group.com)

### \*added function:

Demo Mode – Active demo mode prevents any changes in your device configuration. Demo mode can be turned off in the same way after entering the password.

## Technical specifications

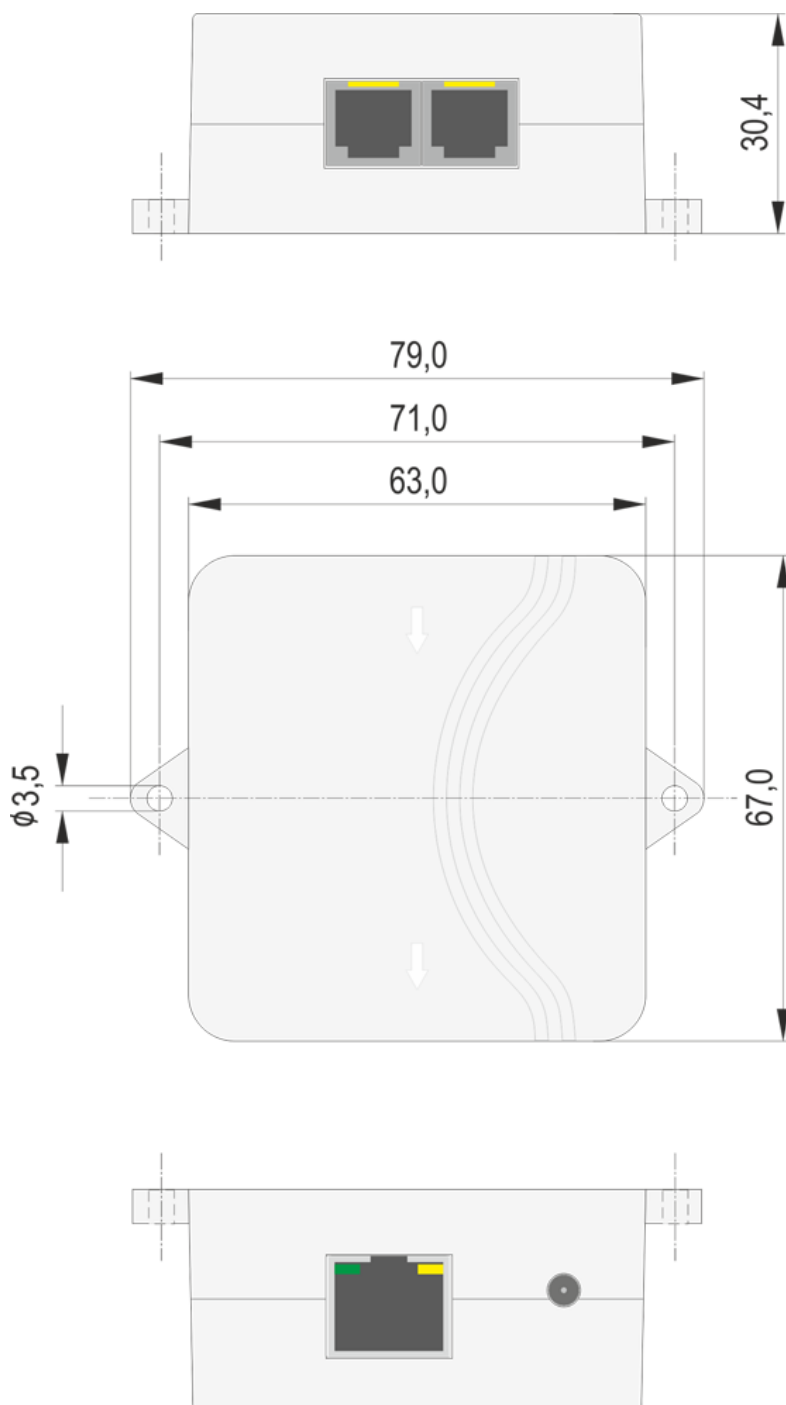
- **Ethernet:** RJ45 – 10/100 BASE-T
- **2 sensor inputs:** RJ11 ports for connecting 1-Wire sensors (temperature, humidity...)
- **"SET" jumper:** configuration jumper for restoring the factory defaults
- **Device features**
  - **Alarms** by e-mail when a threshold is exceeded
  - **Remote monitoring** of the inputs states and values
- **Power supply**
  - **HWg-STE:** +5V / 250 mA
  - **HWg-STE PoE:** +5V / 250 mA (adaptor) or **PoE IEEE 802.3af** (Power over Ethernet)
- **Dimensions:** 65 x 80 x 30 [mm]

- **LED indicators in the RJ45 connector**

- Green: Power / Status
  - Rapid flashing: DHCP network configuration in progress
  - Slow flashing: A sensor is in alarm
- Orange: Link & Activity

<b>ETHERNET</b>	
Interface	RJ45 (10/100BASE-T) – Compatible with 10Mbps and 100Mbps networks
Supported protocols	IP: ARP, TCP/IP (HTTP, Sntp, SMTP), UDP/IP (SNMP)
SNMP compatibility	Ver:1.00 compatible, some parts of the ver 2.0 implemented
<b>SENSORS</b>	
Port / connector	S1, S2 / RJ11 (1-Wire Bus)
Type	HWg original accessories
Sensors	Up to 2 sensors in total
Sensors distance	Up to 60m total bus length with one or two sensors
<b>POWER input</b>	
Power supply	POWER 5V / 250 mA
Connector	Jack Ø3.5 x 1.35 / 10 [mm]
PoE (Power over Ethernet)	RJ45 - IEEE 802.3af (for HWg-STE PoE only)
<b>LED Status indicators</b>	
POWER / status	Green - power OK (status = DHCP/Local alarm)
LINK & Activity	Yellow - Ethernet connectivity
<b>JUMPER</b>	
SET	<b>Load defaults:</b> Power-on with jumper ON for 15 seconds, switch off and remove jumper
<b>Other parameters</b>	
Operating temperature	-10 to +60 °C (+14 to +140 °F)
Dimensions / Weight	65 x 80 x 30 [mm] / 500 g
EMC	FCC Part 15, Class B, CE - EN 55022, EN 55024, EN 61000

## Mechanical dimensions



## Contact details

HW group s.r.o

Rumunská 26 / 122  
Praha 2, 120 00

Tel. +420 222 511 918

Fax. +420 222 513 833

<http://www.HW-group.com>

